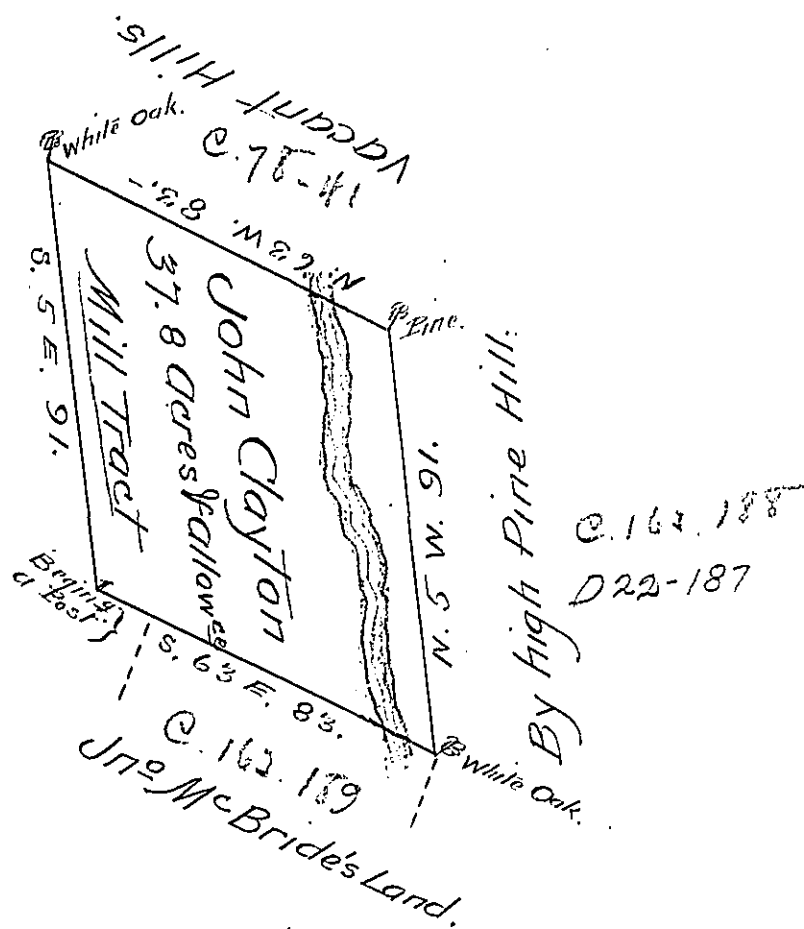


Land Claimed By James Gallaher.



The Draught of a Tract of Land called Mill Tract situate on Cokelamus Creek in the County of Cumberland Containing Thirty Seven Acres One Hundred ^{124 P.} ~~Thirty Eight~~ Perches with allowance proportionate to Six acres $\frac{1}{2}$ Cent. for Roads &c. Survey'd the 13th Day of September A.D. 1766 in Pursuance of an Order to John Clayton Bearing Date at Philad^a the 1st Day of August A.D. 1766 & Numbered 50.

J. Wm. Maclay Dept^x Surve

To John Lukens Esq^r. Surve Gen^l.
of the Province of Pennsylvania

IN TESTIMONY that the above is a copy of the original remaining on file in the Department of Internal Affairs of Pennsylvania, made conformably to an Act of Assembly approved the 16th day of February, 1833, I have hereunto set my Hand and caused the Seal of said Department to be affixed at Harrisburg, this Third day of April 1906.

Isaac R. Brown
Secretary of Internal Affairs.